



## 34 Upper Bloomfield Road

Bath, BA2 2RZ

£1,700 PCM

Semi-detached home with superb rear garden and driveway parking located on the south side of the city, available immediately and offered unfurnished.

- Gas central heating
- Modern kitchen
- Superb rear garden
- Off road parking for 2
- Modern bathroom
- Three bedrooms
- Local amenities on the doorstep
- Local bus service into the city
- Council tax band B

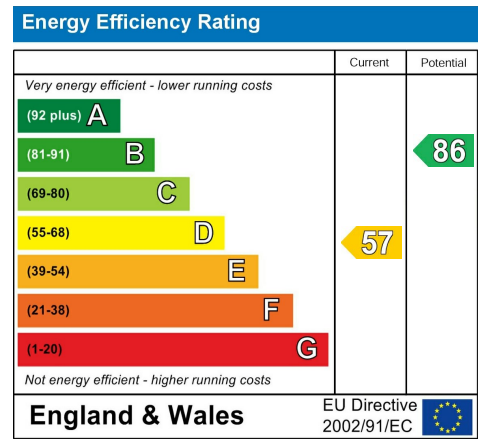
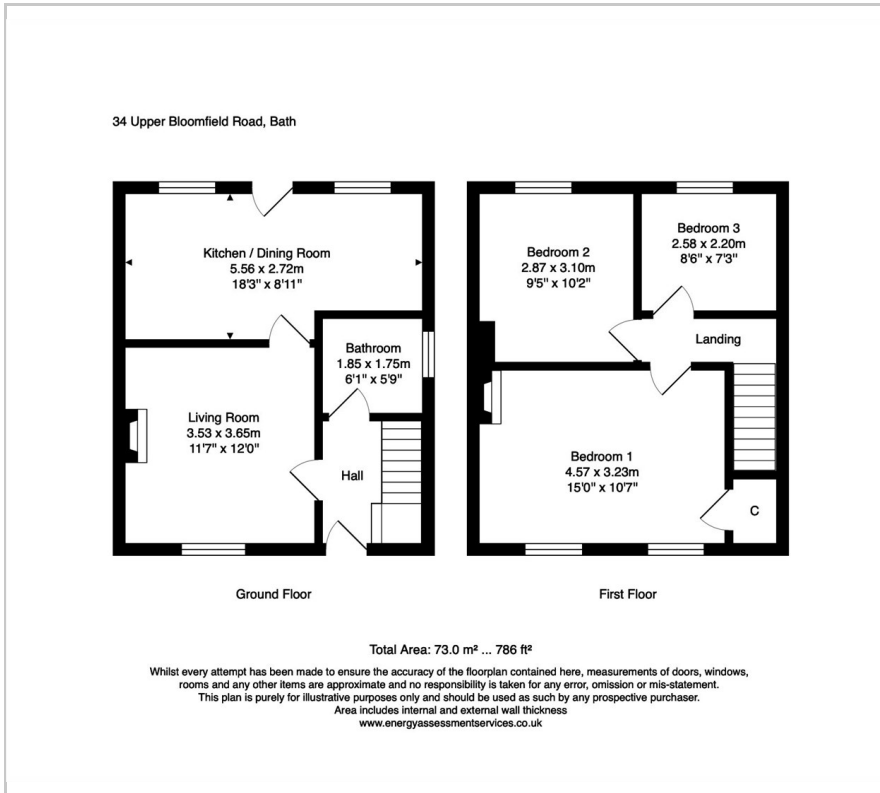
### Viewing

Please contact our Bath Stone Property Office on 01225422224 if you wish to arrange a viewing appointment for this property or require further information.



# Floor Plan

# Energy Efficiency Graph



Please give us Feedback



These particulars, whilst believed to be accurate are set out as a general outline only for guidance and do not constitute any part of an offer or contract. Intending purchasers should not rely on them as statements of representation of fact, but must satisfy themselves by inspection or otherwise as to their accuracy. No person in this firm's employment has the authority to make or give any representation or warranty in respect of the property.